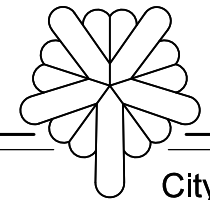


Cedar Rapids East Gateway Sign

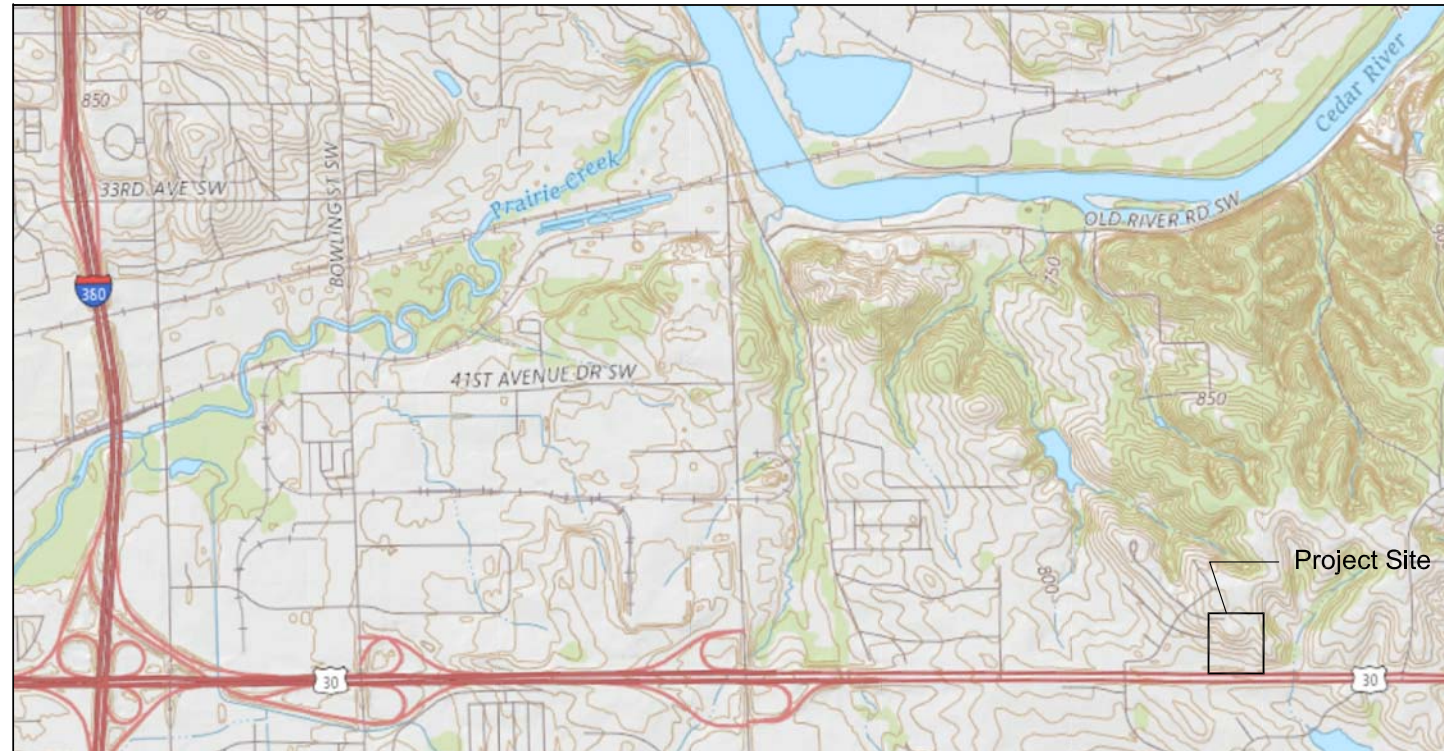


City of
Cedar Rapids,
Iowa

AYRES
ASSOCIATES
5201 E. Terrace Dr.
Suite 200
Madison, WI 53718
608.443.1200
www.AyresAssociates.com

Professional Seal

Vicinity Map



Sheet Index

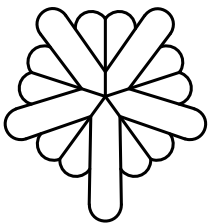
Sheet No.	Sheet Title
L-0	TITLE SHEET
L-1	SITE PLAN
L-2	ENLARGEMENT PLAN
L-3	GRADING PLAN
L-4	SITE DETAILS
L-5	SITE DETAILS

Revision _____ Date _____

Project Name _____

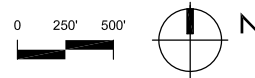
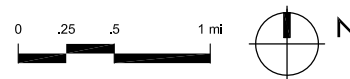
**CEDAR RAPIDS
GATEWAY SIGN**

Cedar Rapids,
IA



City of
Cedar Rapids,
Iowa

Aerial



Landscape Architect



5201 E. Terrace Dr.
Suite 200
Madison, WI 53718
608.443.1200
www.AyresAssociates.com

Subconsultant



Ament Design
2025 S. Arlington Heights Road
Suite 108
Arlington Heights, IL 60005
ph. 847-253-1515
IL Professional Design Firm #184.002495

Plans Prepared For



CITY COUNCIL:

MAYOR:	BRADLEY HART
AT LARGE:	TYLER OLSON
AT LARGE:	ANN POE
AT LARGE:	SUSIE WEINACHT
DISTRICT 1:	MARTIN HOEGER
DISTRICT 2:	SCOTT OVERLAND
DISTRICT 3:	DALE TODD
DISTRICT 4:	SCOTT OLSON
DISTRICT 5:	ASHLEY VANORNY

Drawn By: CB, SK

Checked By: BM

File:

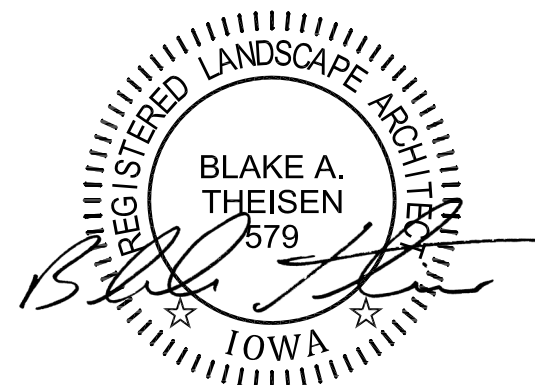
Issued For: BID SET

Date: 08/31/2018

Project No. 52-0626.00

Sheet Title

TITLE SHEET



CITY OF CEDAR RAPIDS

THIS ENGINEERING DOCUMENT IS RECOMMENDED FOR FILING WITH
THE CITY CLERK

PUBLIC WORKS DIRECTOR/CITY ENGINEER

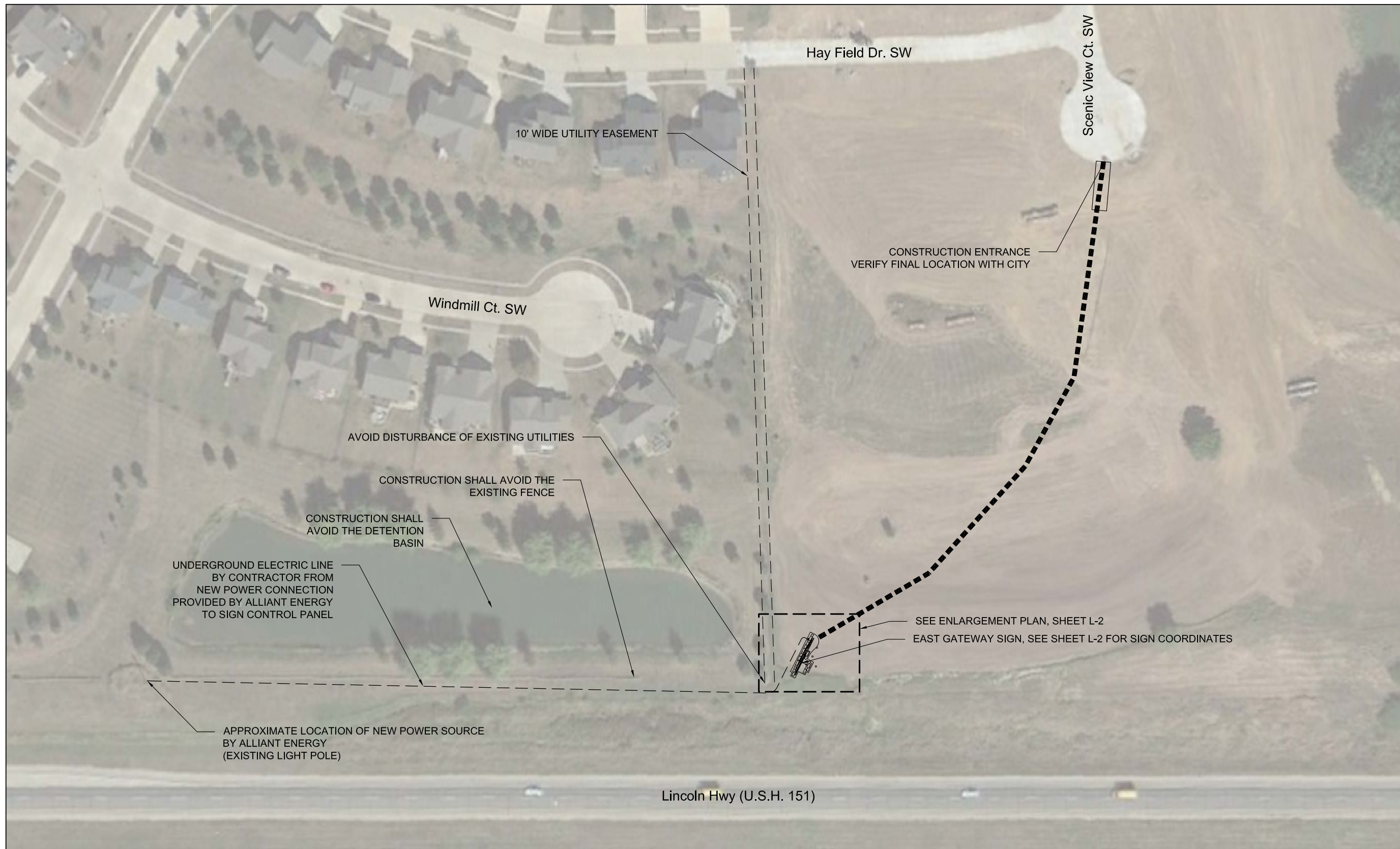
DATE

Sheet Number

L-0

File: P:\52-1000\52-0626.00_CedarRapidEastGateway\Proc\AutoCad\P-T.dwg Layout: L-0 User: mcrrowb Plotted: Aug 31, 2018 - 9:07am

File: P:\52-1000\52-0626.00_CedarRapidsEastGateway\Prod\AutoCad\P-SF.dwg Layout: L-1 User: mrowb Plotter: Aug 31, 2018 - 8:42am



GENERAL NOTES:

- A. SURVEY COMPLETED BY AMENT INC., BELOW GROUND INFORMATION WAS NOT SURVEYED.
- B. SURVEY IS IN IOWA STATE PLANE COORDINATE SYSTEM AND NAVD 88 ELEVATIONS.
- C. CONTRACTOR SHALL CONTACT IOWA ONE CALL BEFORE STARTING CONSTRUCTION TO VERIFY ALL BELOWGROUND UTILITIES.
- D. RESTORE AREAS DAMAGED DURING CONSTRUCTION.

ELECTRICAL NOTES:

- A. THE CONTRACTOR IS RESPONSIBLE FOR THE DESIGN, DOCUMENTATION, AND INSTALLATION OF THE ENTIRE ELECTRICAL SYSTEM.
- B. ELECTRICAL EQUIPMENT SHALL BE MOUNTED TO AVOID IMPEDANCE OF OPERATION OF AND/OR ACCESS TO OTHER EQUIPMENT.
- C. ALL ELECTRICAL EQUIPMENT MOUNTED TO EQUIPMENT SUPPLIED BY OTHER CONTRACTORS SHALL BE APPROVED IN ADVANCE BY THE OTHER CONTRACTOR.
- D. ALL WELDING SHALL BE ACCORDING TO THE AMERICAN WELDING SOCIETY STANDINGS.

AYRES ASSOCIATES
 5201 E. Terrace Dr.
 Suite 200
 Madison, WI 53718
 608.443.1200
 www.AyresAssociates.com

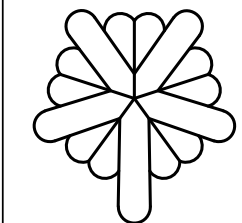
Professional Seal

Revision Date

Project Name

**CEDAR RAPIDS
 GATEWAY SIGN**

Cedar Rapids,
 IA



City of
 Cedar Rapids,
 Iowa

Drawn By: CB, SK

Checked By: BM

File:

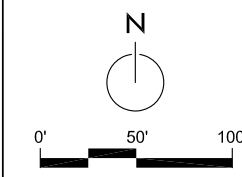
Issued For: BID SET

Date: 08/31/2018

Project No. 52-0626.00

Sheet Title

SITE PLAN



Sheet Number

L-1

NOTES:

- A. THE SIGN AND WALL SHALL MATCH THE CHARACTER, COLORS, AND MATERIALS OF THE EXISTING SOUTH GATEWAY SIGN ON THE EAST SIDE OF INTERSTATE 380 BETWEEN HIGHWAY 30/151 AND 76TH AVENUE SW.
- B. ALL BOULDERS TO BE SET LEVEL.
- C. ALL LANDSCAPE BOULDER OUTCROPPINGS TO BE STACKED 2 BOULDERS HIGH.
- D. SEE SHEET L-5 FOR LANDSCAPE DETAILS.
- E. SEE SHEET L-1 FOR CONTROL POINT.
- F. SEED, TOPSOIL, FERTILIZE AND MULCH DISTURBED AREA WITH TYPE 1 SEED MIX.
- G. CONTRACTOR SHALL REPAIR, RESTORE, OR REPLACE EXISTING FENCE DAMAGED DURING CONSTRUCTION.

PROPERTY BOUNDARY

UNDERGROUND ELECTRIC LINE
BY CONTRACTOR FROM
NEW POWER CONNECTION
PROVIDED BY ALLIANT ENERGY
TO SIGN CONTROL PANEL

• 826.4

• 825.8

• 825.0

• 824.2

STONE WALL (1)
L-5

SIGN (1) (2)
L-4 L-4

POST MOUNTED CONTROL PANEL
PROVIDE MAINTENANCE RECEPTACLE WITH
WEATHERPROOF COVER MOUNT
NEXT TO CONTROL PANEL.
COORDINATE POWER HOOKUP WITH ALLIANT ENERGY.
PROVIDE PHOTOCELL MOUNT TO THE
CONTROL PANEL FOR AUTOMATIC DUSK/DAWN
OPERATION OF SIGN LIGHTING.

SIGN PANEL SUPPORT (4)
L-4

MP (3)
N3442090.2
E5434669.5

MAINTENANCE STRIP, 1' MIN.

N3442115.6
E5434677.2

FRONT CORNER
OF BRIDGE ELEMENT
N3442111.85
E5434677.52

R8'

(5) FLOOD LIGHT
L-5

N3442098.3
E5434673.6

(5) FLOOD LIGHT
L-5

(3) SIGN SUPPORT
L-4

N3442087.9
E5434674.1

(2) BOULDER OUTCROPPING
L-5

(5) FLOOD LIGHT
L-5

(5) FLOOD LIGHT
L-5

N3442075.9
E5434668.0

FRONT CORNER
OF BRIDGE ELEMENT
N3442074.35
E5434658.61

N3442073.1
E5434656.6

PROPERTY BOUNDARY

SPECIES LIST

Symbol	Botanical Name	Common Name	Size	Root	Qty	Spacing
TREES						
MP	Malus 'Professor Sprenger'	Professor Sprenger Crabapple	2"	B&B	3	As shown
GRASSES						
ss	Schizachyrium scoparium	Little Bluestem	Gal.	Cont.	26	24" o.c.

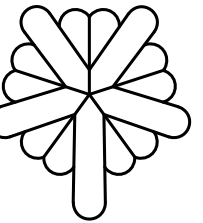
Professional Seal

Revision Date

Project Name

CEDAR RAPIDS GATEWAY SIGN

Cedar Rapids, IA



City of Cedar Rapids, Iowa

Drawn By: CB, SK

Checked By: BM

File:

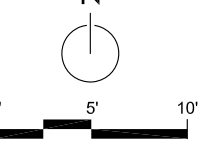
Issued For: BID SET

Date: 08/31/2018

Project No. 52-0626.00

Sheet Title

ENLARGEMENT PLAN



Sheet Number

L-2

File: P:\52-1000\52-0626.00_CedarRapidEastGateway\Prod\AutoCad\P-SC.dwg Layout: L-3 User: mawrowb Plotter: Aug 31, 2018 - 8:56am

NOTES:
1. ALL IMPORTED GRANULAR FILL FOR USE UNDER STRUCTURES SHALL BE FREE OF ANY ORGANIC MATERIAL OR LARGE STONES. OTHER FILL IMPORTED FOR AREAS NOT UNDER STRUCTURES SHALL BE REASONABLY FREE OF DEBRIS, ROOTS AND STONES LARGER THAN 6".

GRADING GENERAL NOTES:
1. CONTOURS AND SPOT GRADES SHOWN IN PLANS MAY BE MODIFIED TO FIT EXISTING CONDITIONS AFTER DISCUSSION WITH THE ENGINEER OR OWNER.
2. ALL EXCESS MATERIAL SHALL BE STOCKPILED AT LOCATIONS APPROVED BY THE OWNER'S REPRESENTATIVE PRIOR TO PLACEMENT OF ANY MATERIAL. STOCKPILES SHALL BE ENCLOSED WITH SILT FENCE UNTIL TEMPORARY OR PERMANENT VEGETATIVE COVER IS ESTABLISHED.
3. THE REMOVAL OF VEGETATIVE COVER AND EXPOSURE OF THE BARE GROUND MUST BE RESTRICTED TO THE MINIMUM AMOUNT NECESSARY FOR CONSTRUCTION. AREAS WHERE SOIL IS EXPOSED MUST BE PROTECTED FROM EROSION BY SEEDING AND MULCHING, SODDING, DIVERSION OF SURFACE RUNOFF, INSTALLATION OF STRAW BALES OR SILT SCREENS, CONSTRUCTION OF SETTLING BASINS, OR SIMILAR METHODS AS SOON AS POSSIBLE AFTER REMOVAL OF THE ORIGINAL GROUND COVER.
4. SEE EROSION CONTROL NOTES ON SHEET L-1.
5. ALL UNDERGROUND UTILITIES HAVE BEEN SHOWN TO A REASONABLE DEGREE OF ACCURACY. IT SHALL BE THE CONTRACTOR'S RESPONSIBILITY TO VERIFY THEIR EXACT LOCATION AND DEPTH.

EROSION NOTES:
A. COMPLETE WORK IN ACCORDANCE WITH CITY OF CEDAR RAPIDS METROPOLITAN AREA STANDARD SPECIFICATIONS FOR PUBLIC IMPROVEMENT
http://cms.revize.com/revize/cedarrapids/local_government/departments_g_-_v/public_works/public_improvement_standards.php#revize_document_center_rz1611
B. THE CONTRACTOR SHALL MINIMIZE THE AMOUNT OF DISTURBED AREA.
C. PLANS SHOW SUGGESTED LOCATIONS FOR INSTALLATION OF EROSION CONTROL ITEMS. FINAL LOCATIONS SHALL BE DETERMINED IN THE FIELD BY THE CONTRACTOR AND APPROVED BY THE ENGINEER. EROSION CONTROL ITEMS SHALL BE IN PLACE PRIOR TO DEMOLITION/CONSTRUCTION. EROSION CONTROL ITEMS SHALL BE MAINTAINED UNTIL SUCH TIME THAT THE ENGINEER DEEMS THE DEVICES NO LONGER NECESSARY. CONTRACTOR SHALL ENSURE CONTROL DEVICES ARE OPERATING EFFECTIVELY ON NO LESS THAN A WEEKLY BASIS. DURING INCLEMENT WEATHER THE CONTRACTOR SHALL EXAMINE DEVICES SOONER.
D. SOIL DISTURBANCE SHALL BE CONDUCTED IN SUCH A MANNER AS TO MINIMIZE EROSION. SOIL STABILIZATION MEASURES SHALL CONSIDER THE TIME OF YEAR, SITE CONDITIONS AND THE USE OF TEMPORARY OR PERMANENT MEASURES. ALL DISTURBED AREAS OF LAWN SHALL BE PATCHED WITH SEED FERTILIZER AND MULCH/MAT.
<http://cms.revize.com/revize/cedarrapids/Public%20Works/Standards-Specs-DesignDetails/Ch%207%20Erosion%20Control.pdf>
E. ALL DISTURBED AREAS SHALL BE STABILIZED PER THE CITY'S SPECIFICATIONS IF THERE IS A DELAY OF MORE THAN 14 CALENDAR DAYS BETWEEN INITIAL GRADING AND FINAL TOPSOIL AND SEEDING.
F. ALL DISTURBED AREAS SHALL BE STABILIZED WITH TEMPORARY OR PERMANENT MEASURES WITHIN 14 CALENDAR DAYS OF THE END OF ACTIVE HYDROLOGIC DISTURBANCE, OR RE-DISTURBANCE. THE CONTRACTOR SHALL USE BONDED FIBER MESH SOIL STABILIZER ON ALL SEEDED SURFACES WITH SLOPES GREATER THAN 9%.
G. ALL TEMPORARY EROSION AND SEDIMENT CONTROL MEASURES SHALL BE REMOVED WITHIN 30 DAYS AFTER FINAL SITE STABILIZATION IS ACHIEVED OR AFTER THE TEMPORARY MEASURES ARE NO LONGER NEEDED.
H. A STABILIZED CONSTRUCTION ENTRANCE PER THE CITY STANDARD DETAIL 1300-60 WILL BE REQUIRED FOR THIS PROJECT. THE CONTRACTOR SHALL SECURE CITY APPROVAL AND APPROVAL FROM OTHER GOVERNING AGENCIES IF REQUIRED FOR CONSTRUCTION ENTRANCE LOCATION. THE EROSION CONTROL MEASURES INDICATED ON THE PLANS ARE THE MINIMUM REQUIREMENTS. ADDITIONAL MEASURES MAY BE REQUIRED AS DIRECTED BY THE ENGINEER OR GOVERNING AGENCY.

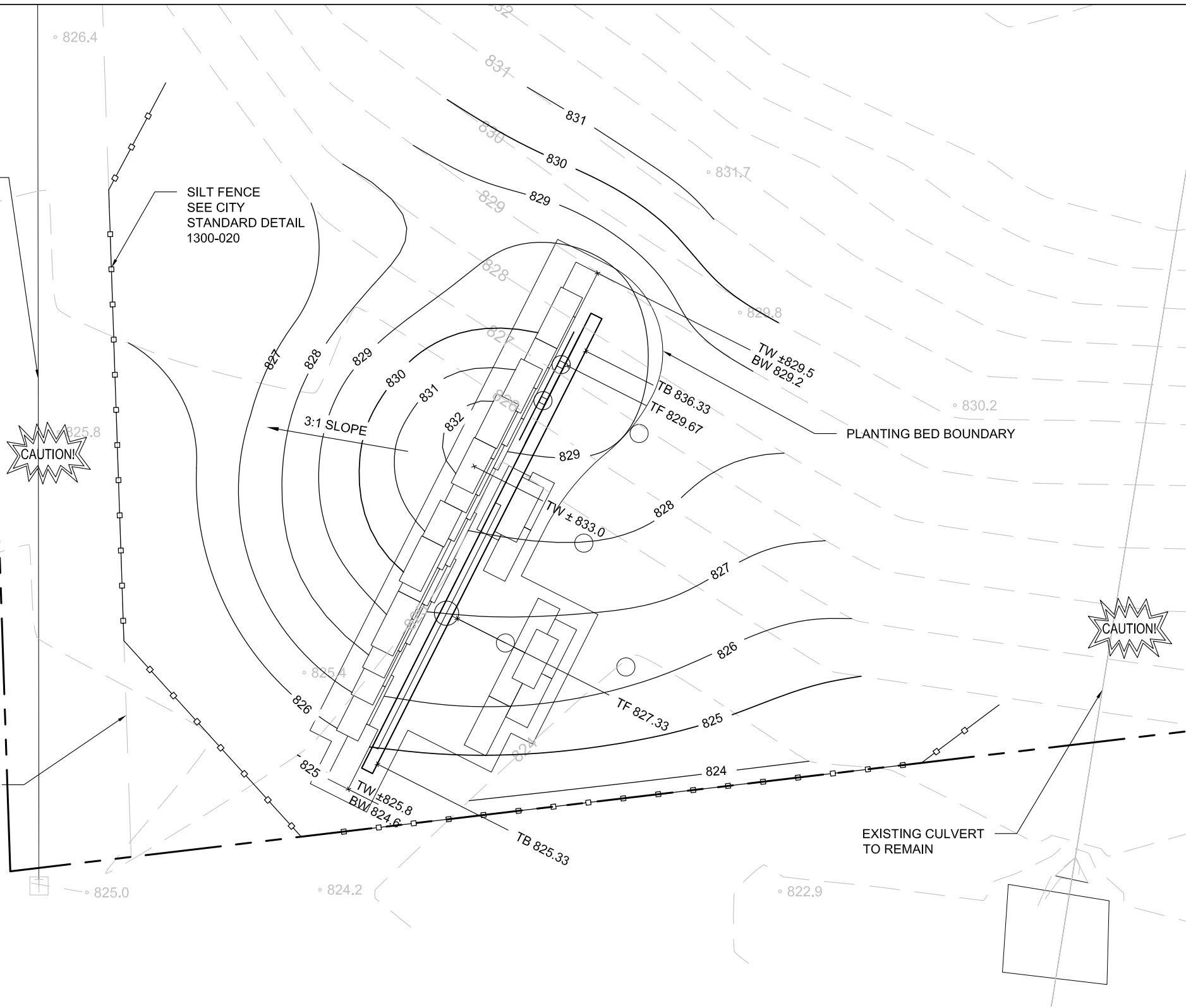
EXISTING FIBER OPTIC LINE: NOT FIELD LOCATED. CONTRACTOR TO LOCATE AND PROTECT.

SILT FENCE SEE CITY STANDARD DETAIL 1300-020



10' PLATTED UTILITY EASEMENT

LEGEND
TW TOP OF WALL
TS TOP OF STONE
TF TOP OF FOUNDATION
TB TOP OF BRIDGE
BW FINISH GRADE AT BOTTOM OF WALL



AYRES ASSOCIATES
5201 E. Terrace Dr.
Suite 200
Madison, WI 53718
608.443.1200
www.AyresAssociates.com

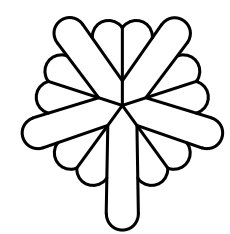
Professional Seal

Revision	Date

Project Name

CEDAR RAPIDS GATEWAY SIGN

Cedar Rapids, IA

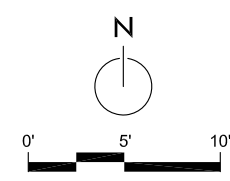


City of Cedar Rapids, Iowa

Drawn By: CB, SK
Checked By: BM
File:
Issued For: BID SET
Date: 08/31/2018
Project No. 52-0626.00

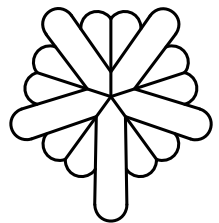
Sheet Title

GRADING PLAN

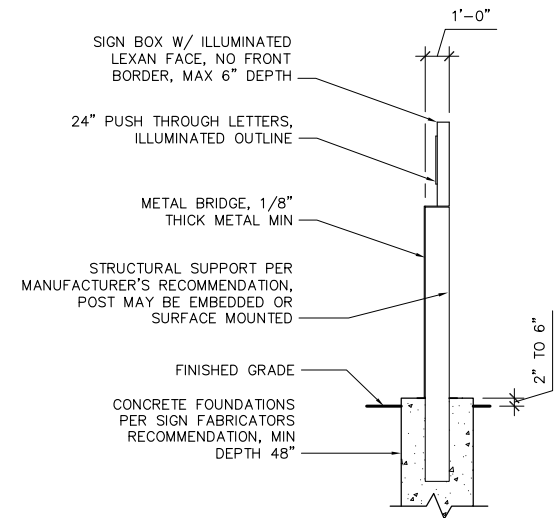
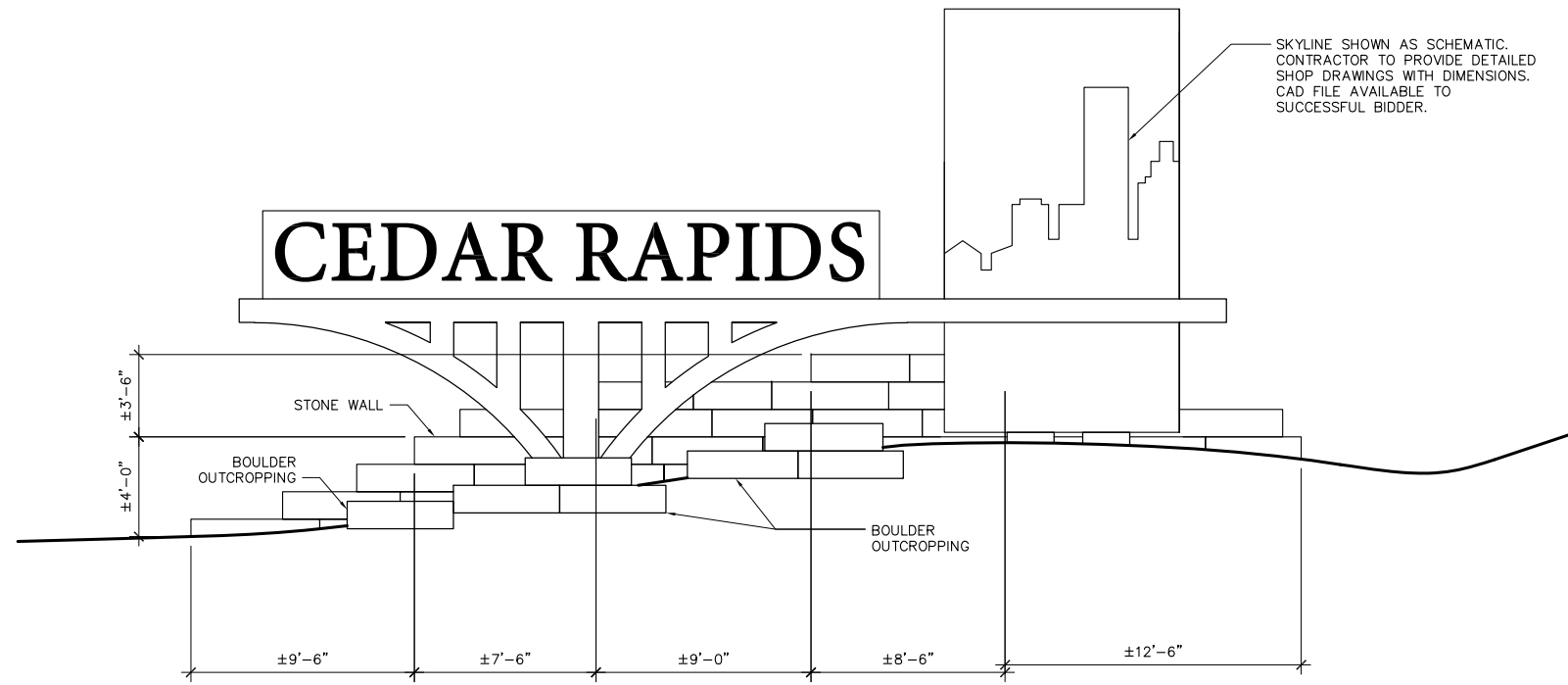


Sheet Number

L-3



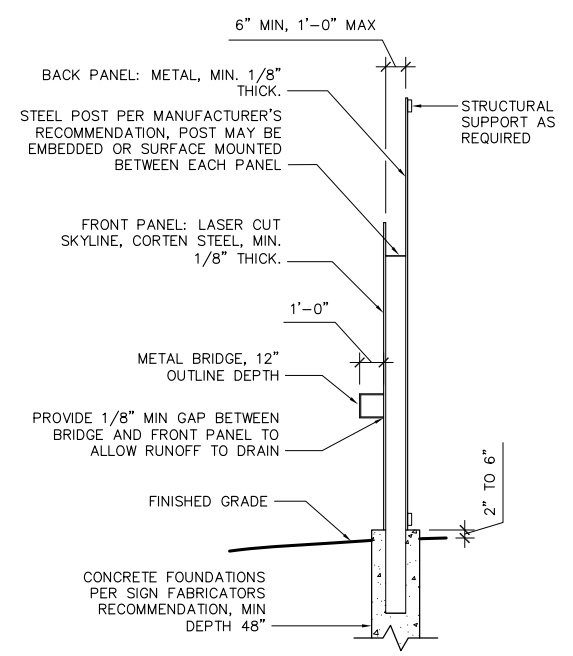
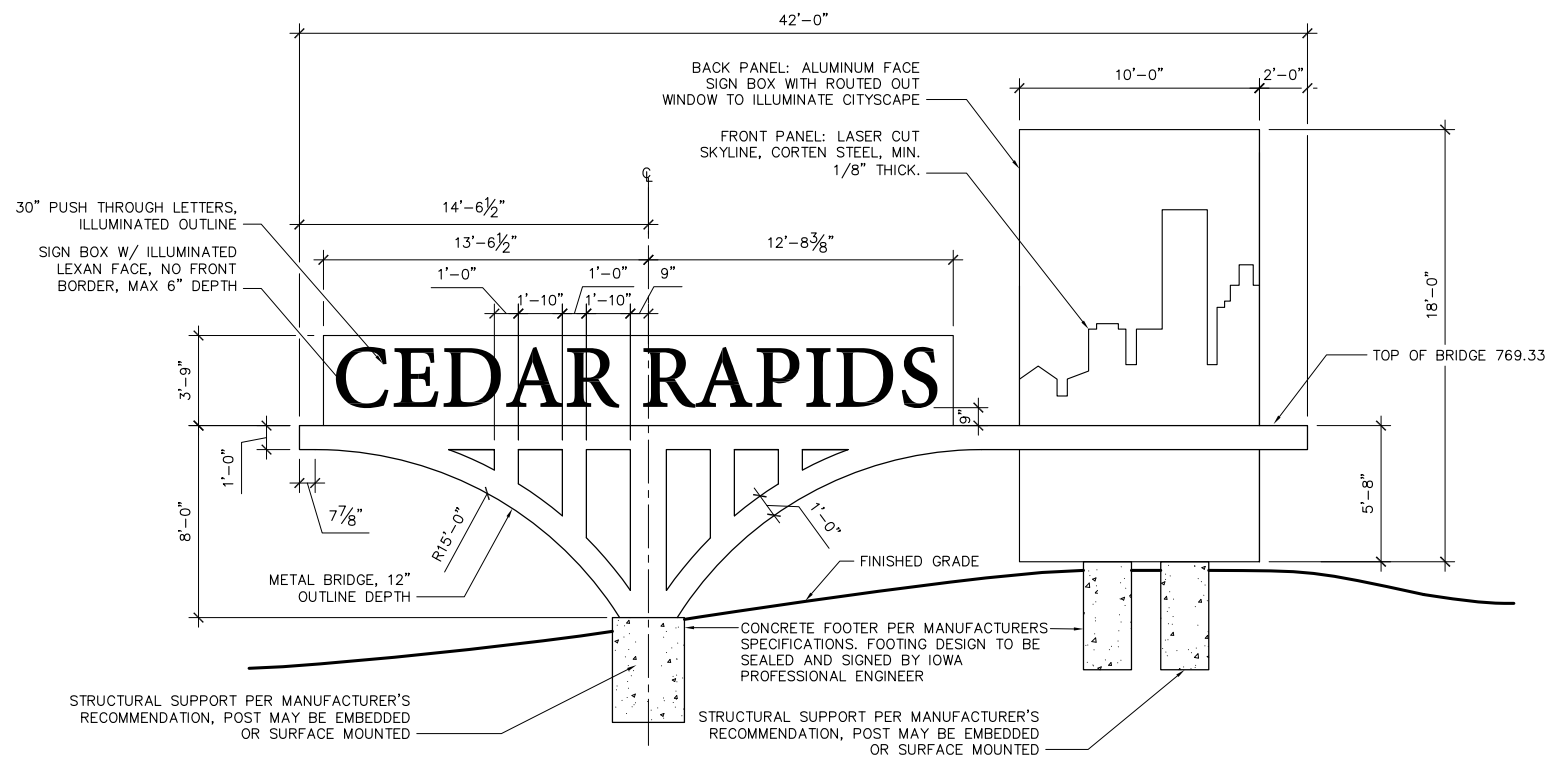
NOTE:
 1. FOUNDATION DESIGN IS THE RESPONSIBILITY OF THE SIGN MANUFACTURER.
 2. PROVIDE SHOP DRAWINGS FOR SIGN.
 3. MAINTENANCE STRIP TO INCLUDE WEED BARRIER UNLESS SET ON DENSE GRADED BASE.



1 SIGN AND WALL - SOUTH ELEVATION
 L-4

SCALE 1/8" = 1'-0"

3 SIGN SUPPORT
 L-4 SCALE 1/8" = 1'-0"



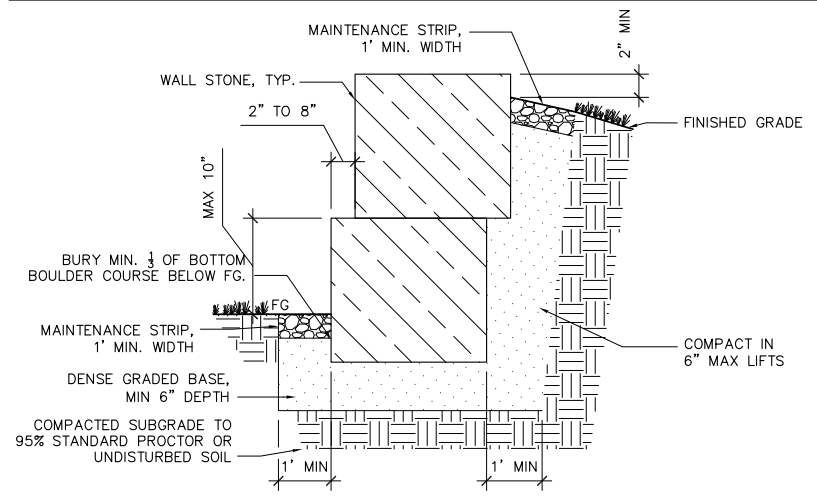
2 SIGN - SECTION
 L-4

SCALE 1/8" = 1'-0"

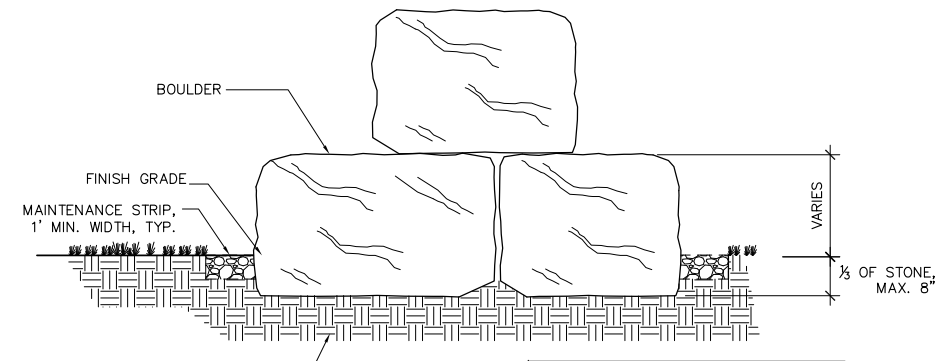
4 SIGN PANEL SUPPORT
 L-4 SCALE 1/8" = 1'-0"

File: P:\52-1000\52-0626.00_CedarRapidsEastGateway\Prod\AutoCad\P-D.dwg Layout: L-4 User: morrowb Plotted: Aug 31, 2018 - 8:56am

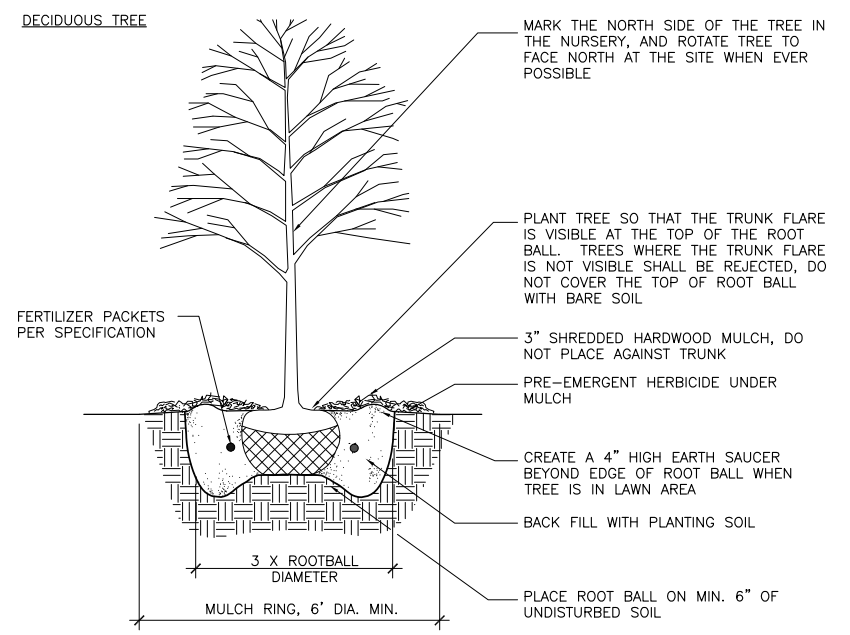
- BLOCK STONE WALL NOTES**
1. COURSING HEIGHTS TO STAY CONSISTENT WITHIN COURSE, BUT MAY VARY FROM 12"-16" BETWEEN COURSES.
 2. PLACE LARGEST BOULDERS ON BOTTOM COURSE, BURY AS INDICATED ON DETAILS.
 3. STONES SHALL BE FIT TIGHT WITH MAXIMUM 2" GAP BETWEEN 75% OF THE STONES.
 4. STONES SHALL BE SET LEVEL AND FIRM ON COMPACTED BASE OVERLAPPING STONE BELOW AS INDICATED.
 5. MAINTENANCE STRIP TO INCLUDE WEED BARRIER UNLESS SET ON DENSE GRADED BASE



1 STONE WALL
L-5 NTS

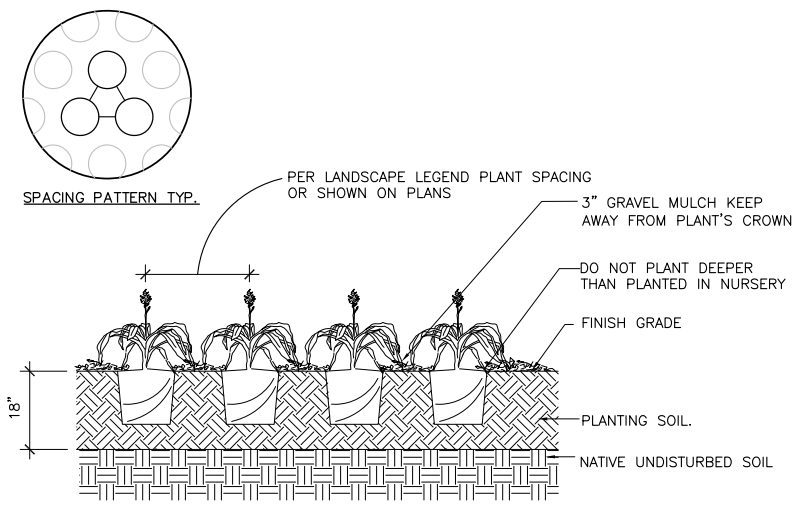


2 BOULDER OUTCROPPING
L-5 NTS



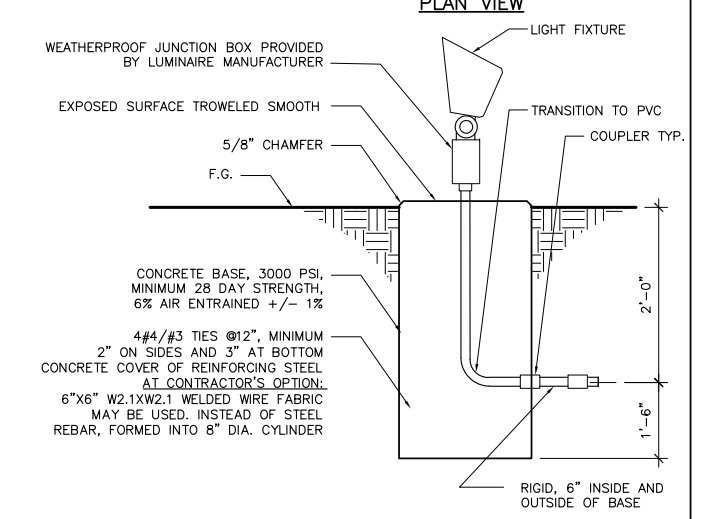
- NOTES:**
1. DO NOT HEAVILY PRUNE THE TREE AT PLANTING, PRUNE ONLY CROSSOVER LIMBS, CO-DOMINANT LEADERS, AND BROKEN OR DEAD BRANCHES. SOME INTERIOR TWIGS AND LATERAL BRANCHES MAY BE PRUNED; HOWEVER, DO NOT REMOVE THE TERMINAL BUDS OF BRANCHES THAT EXTEND TO THE EDGE OF THE CROWN.
 2. STAKE TREES ONLY UPON THE APPROVAL OF THE LANDSCAPE ARCHITECT
 3. WRAP TREE TRUNKS ONLY UPON THE APPROVAL OF THE LANDSCAPE ARCHITECT
 4. REMOVE ALL TWINE, ROPE, WIRE AND BURLAP FROM TOP AND SIDES OF ROOT BALL.

3 B&B TREE PLANTING DETAILS
L-5 NTS



4 GROUNDCOVER/PERENNIAL/BULB PLANTING DETAIL
L-5 NTS

- NOTE:**
1. CATALOG NUMBER SHALL NOT BE CONSIDERED COMPLETE AND MATERIAL SHALL NOT BE ORDERED BY MANUFACTURER AND CATALOG NUMBER ONLY. THE MANUFACTURER LISTED BELOW IS THE BASIS FOR DESIGN.
 2. ALL LAMPS FOR THIS PROJECT SHALL BE FURNISHED AND INSTALLED BY THE ELECTRICAL CONTRACTOR.
- LIGHT FIXTURE**
1. DESCRIPTION: LED FLOODLIGHT, DIE CAST ALUMINUM HOUSING AND KNUCKLE WITH INTEGRAL EXTENDED SPLICE COMPARTMENT, 180DEGREE VERTICAL ADJUSTMENT, 358 DEGREE HORIZONTAL, SILICONE GASKET, 45 DEGREE CUTOFF CAP, WITH INTEGRAL LED DRIVER AND WIRE GUARD, STANCHION MOUNT, IP66, LISTED FOR WET LOCATION, BRONZE TEXTURED POLYESTER POWDERCOAT FINISH.
 2. SIZE: 17"W X 10"H X 10"D
 3. LAMPS: LED, 35 WATT, LED ARRAY, 3000K, HORIZONTAL FLOOD, 120 VOLT
 4. APPROVED MANUFACTURER: GARDCO DFC7-ST-HFL-45LA-WW



5 FLOOD LIGHT
L-5 NTS

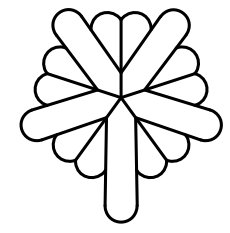
AYRES ASSOCIATES
5201 E. Terrace Dr.
Suite 200
Madison, WI 53718
608.443.1200
www.AyresAssociates.com

Professional Seal

Revision	Date

Project Name
CEDAR RAPIDS GATEWAY SIGN

Cedar Rapids, IA



City of Cedar Rapids, Iowa

Drawn By: CB, SK
Checked By: BM
File:
Issued For: BID SET
Date: 08/31/2018
Project No. 52-0626.00

Sheet Title
SITE DETAILS

Sheet Number

L-5

File: P:\52-1000\52-0626.00 CedarRapidsEastGateway Prod\AutoCad\P-D.dwg Layout: L-5 User: mcrrowb Plotted: Aug 31, 2018 - 8:56am